

Injury attendances to Trafford General Hospital Emergency Department

April 2011 to March 2012

This report summarises recorded injury attendances to Trafford General Emergency Department (ED) between April 2011 and March 2012.

Between April 2011 and March 2012 there were 58,157 injury attendances to Trafford General ED. Females accounted for half (50%) of all injury attendances. The month with the highest injury attendances was July (n=5,198) with February (n=4,430) having the lowest attendances ([Figure 1](#)). The majority of attendances were recorded as other injury (94%). Sports injury accounted for 2% of all injury attendances, as did road traffic collisions (RTC) ([Table 1](#)).

For all injuries the highest proportion of attendances were for persons aged 20 to 34 (21%) and 65 plus years (20%) ([Figure 2](#)). Four in ten (40%) RTC attendees were aged 20 to 34 years. Over half (53%) of sports injury attendees were aged 5 to 19 years ([Figure 3](#)).

[Table 2](#) shows the ethnicity of attendees to Trafford General ED. Almost nine in ten (86%) were white.

The disposal of a patient can give an indication of the severity of the injuries sustained. Two-fifths (40%) of attendees were discharged, nearly four in ten (35%) were referred and 13% were admitted to hospital ([Table 3](#)). Almost two-thirds (63%) of RTC attendees were discharged. Over half (52%) of sports injury

attendees were discharged, while over a quarter (27%) of deliberate self-harm (DSH) attendees were admitted ([Table 4](#)).

[Table 5](#) shows the arrival methods of attendances at Trafford General ED. Over four-fifths (85%) of attendees arrived by other means, whilst 15% arrived by ambulance.

[Table 6](#) shows assault attendances to Trafford General ED. There were 545 assault attendances recorded between April 2011 and March 2012. Over seven in ten (72%) were male, and almost half (47%) were aged 20 to 34 years. Almost three in ten (28%) of assault attendees arrived at the ED by ambulance.

Figure 1: Trafford General ED: Total injury attendances by gender and month, April 2011 to March 2012

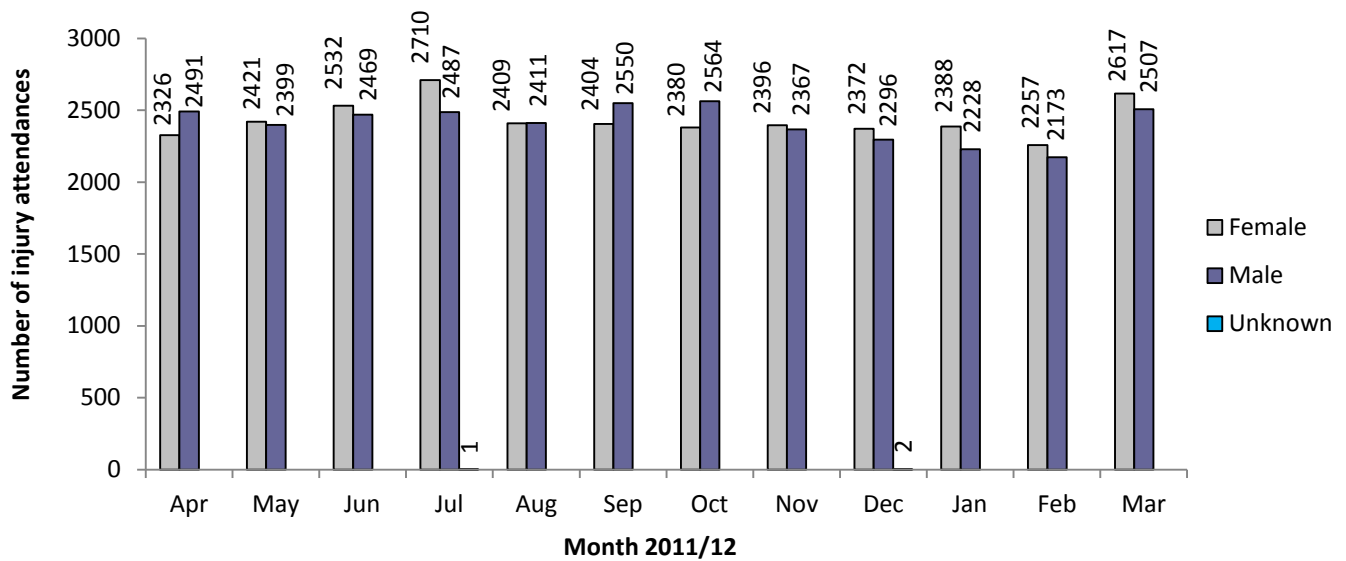


Table 1: Trafford General ED: Total injury attendances by injury group and month, April 2011 to March 2012

| Injury group | Apr | May | Jun | Jul | Aug | Sep | Oct | Nov | Dec | Jan | Feb | Mar | Total | % |
|---------------|-------------|-------------|-------------|-------------|-------------|-------------|-------------|-------------|-------------|-------------|-------------|-------------|--------------|------------|
| Other injury | 4531 | 4521 | 4808 | 4915 | 4590 | 4582 | 4508 | 4412 | 4388 | 4299 | 4117 | 4725 | 54396 | 94 |
| Sports injury | 80 | 72 | 45 | 110 | 59 | 187 | 186 | 157 | 64 | 78 | 135 | 203 | 1376 | 2 |
| RTC | 116 | 131 | 80 | 94 | 85 | 92 | 138 | 112 | 131 | 134 | 95 | 113 | 1321 | 2 |
| Assault | 44 | 46 | 33 | 38 | 53 | 50 | 61 | 53 | 37 | 42 | 49 | 39 | 545 | 1 |
| DSH | 46 | 50 | 35 | 41 | 33 | 43 | 51 | 29 | 50 | 63 | 34 | 44 | 519 | 1 |
| Total | 4817 | 4820 | 5001 | 5198 | 4820 | 4954 | 4944 | 4763 | 4670 | 4616 | 4430 | 5124 | 58157 | 100 |

Figure 2: Trafford General ED: Total injury attendances by age group and month, April 2011 to March 2012

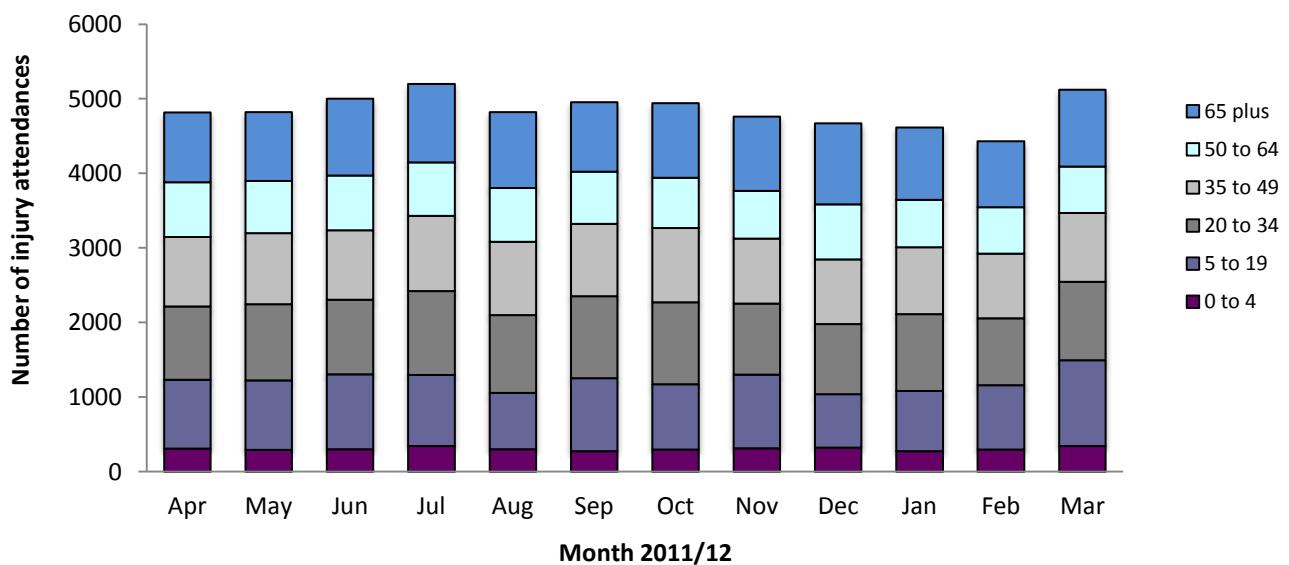


Figure 3: Trafford General ED: Total injury attendances by age group and injury group (excluding other injury), April 2011 to March 2012

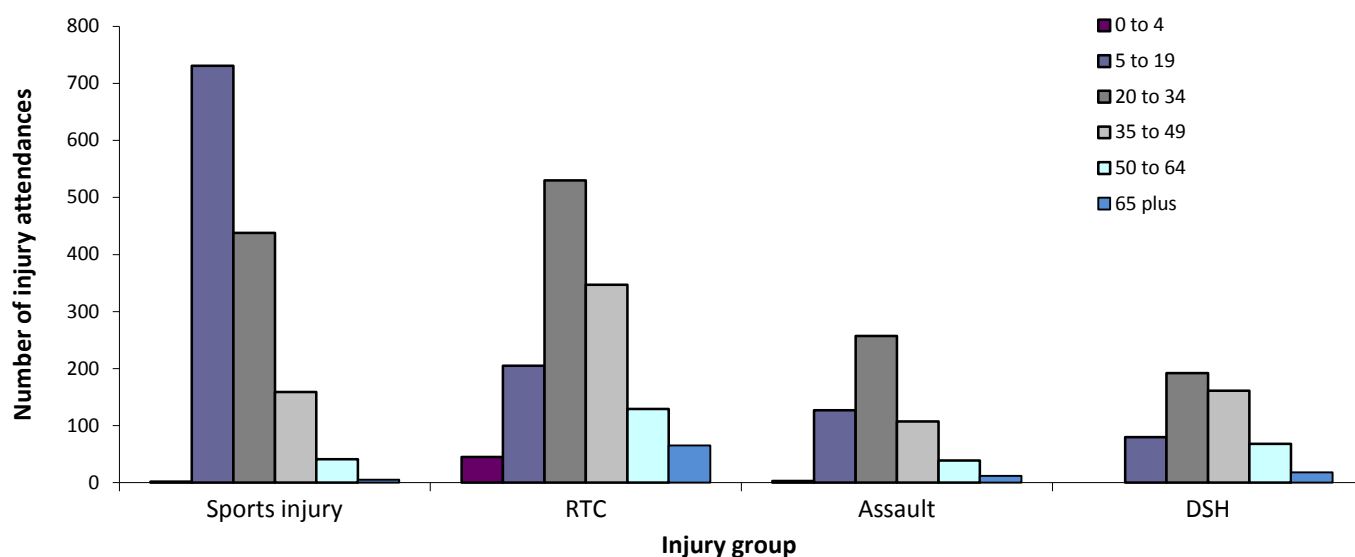


Table 2: Trafford General ED: Total injury attendances by ethnicity and month, April 2011 to March 2012^{1,2*}

| Ethnicity | Apr | May | Jun | Jul | Aug | Sep | Oct | Nov | Dec | Jan | Feb | Mar | Total | % |
|------------------------|-------------|-------------|-------------|-------------|-------------|-------------|-------------|-------------|-------------|-------------|-------------|-------------|--------------|------------|
| White | 4092 | 4112 | 4311 | 4465 | 4196 | 4310 | 4278 | 4178 | 4051 | 4044 | 3780 | 4479 | 50296 | 86 |
| Not known | 288 | 267 | 218 | 245 | 194 | 206 | 187 | 141 | 135 | 137 | 133 | 120 | 2271 | 4 |
| Pakistani | 103 | 126 | 119 | 95 | 108 | 113 | 104 | 109 | 125 | 106 | 138 | 98 | 1344 | 2 |
| Black | 81 | 68 | 93 | 73 | 80 | 83 | 94 | 70 | 94 | 96 | 104 | 102 | 1038 | 2 |
| Mixed | 68 | 59 | 61 | 89 | 75 | 77 | 98 | 85 | 71 | 60 | 87 | 97 | 927 | 2 |
| Indian | 70 | 62 | 76 | 74 | 65 | 71 | 88 | 69 | 86 | 63 | 79 | 94 | 897 | 2 |
| Any other ethnic group | 81 | 91 | 80 | 95 | 71 | 57 | 57 | 67 | 72 | 70 | 58 | 73 | 872 | 1 |
| Asian other | 18 | 23 | 24 | 34 | 11 | 20 | 19 | 26 | 17 | 21 | 28 | 32 | 273 | 0 |
| Chinese | *** | *** | *** | 21 | 14 | 12 | 9 | 12 | 12 | 13 | 12 | 23 | 167 | 0 |
| Bangladeshi | *** | *** | *** | 7 | 6 | 5 | 10 | 6 | 7 | 6 | 11 | 6 | 72 | 0 |
| Total | 4817 | 4820 | 5001 | 5198 | 4820 | 4954 | 4944 | 4763 | 4670 | 4616 | 4430 | 5124 | 58157 | 100 |

*Percentages may not add to 100 due to rounding

Table 3: Trafford General ED: Total injury attendances by method of disposal and month, April 2011 to March 2012^{3*}

| Disposal | Apr | May | Jun | Jul | Aug | Sep | Oct | Nov | Dec | Jan | Feb | Mar | Total | % |
|---------------------|-------------|-------------|-------------|-------------|-------------|-------------|-------------|-------------|-------------|-------------|-------------|-------------|--------------|------------|
| Discharged | 1913 | 2039 | 2089 | 2209 | 2013 | 1995 | 1938 | 1719 | 1804 | 1676 | 1681 | 1904 | 22980 | 40 |
| Referral/ follow-up | 1665 | 1619 | 1710 | 1776 | 1723 | 1793 | 1695 | 1837 | 1593 | 1680 | 1570 | 1882 | 20543 | 35 |
| Other | 668 | 592 | 606 | 636 | 515 | 609 | 703 | 582 | 577 | 616 | 550 | 674 | 7328 | 13 |
| Admitted | 571 | 570 | 596 | 577 | 569 | 557 | 608 | 625 | 696 | 644 | 629 | 664 | 7306 | 13 |
| Total | 4817 | 4820 | 5001 | 5198 | 4820 | 4954 | 4944 | 4763 | 4670 | 4616 | 4430 | 5124 | 58157 | 100 |

*Percentages may not add to 100 due to rounding.

¹ Please note that all numbers less than five have been suppressed in line with patient confidentiality and if there is only one number <5 in a category then two numbers will be suppressed at the next level.

² White=Irish, British, other white background; Mixed = white and black, white and Asian, mixed any other; Black=African, Caribbean, other black.

³ Admitted=admitted to hospital/became a lodged patient of the same health care provider; Discharged=discharged - did not require any follow up treatment; Referral/follow-up=discharged - follow up treatment to be provided by GP, referred to ED clinic, referred to fracture clinic, referred to other out-patient clinic, referred to other health care professional; Other=died in department, left department before being treated, left department having refused treatment, other.

Table 4: Trafford General ED: Total injury attendances by method of disposal and injury group, April 2011 to March 2012*

| Disposal | Assault | | DSH | | Other injury | | RTC | | Sports injury | | Total | |
|---------------------|------------|------------|------------|------------|--------------|------------|-------------|------------|---------------|------------|--------------|------------|
| | n | % | n | % | n | % | n | % | n | % | n | % |
| Discharged | 213 | 39 | 54 | 10 | 21173 | 39 | 830 | 63 | 710 | 52 | 22980 | 40 |
| Referral/ follow-up | 153 | 28 | 59 | 11 | 19428 | 36 | 369 | 28 | 534 | 39 | 20543 | 35 |
| Other | 141 | 26 | 268 | 52 | 6701 | 12 | 92 | 7 | 126 | 9 | 7328 | 13 |
| Admitted | 38 | 7 | 138 | 27 | 7094 | 13 | 30 | 2 | 6 | 0 | 7306 | 13 |
| Total | 545 | 100 | 519 | 100 | 54396 | 100 | 1321 | 100 | 1376 | 100 | 58157 | 100 |

*Percentages may not total 100 due to rounding.

Table 5: Trafford General ED: Total injury attendances by mode of arrival and month, April 2011 to March 2012

| Arrival mode | Apr | May | Jun | Jul | Aug | Sep | Oct | Nov | Dec | Jan | Feb | Mar | Total | % |
|--------------|-------------|-------------|-------------|-------------|-------------|-------------|-------------|-------------|-------------|-------------|-------------|-------------|--------------|------------|
| Other | 4074 | 4136 | 4278 | 4451 | 4068 | 4252 | 4228 | 4046 | 3844 | 3853 | 3728 | 4388 | 49346 | 85 |
| Ambulance | 743 | 684 | 723 | 747 | 752 | 702 | 716 | 717 | 826 | 763 | 702 | 736 | 8811 | 15 |
| Total | 4817 | 4820 | 5001 | 5198 | 4820 | 4954 | 4944 | 4763 | 4670 | 4616 | 4430 | 5124 | 58157 | 100 |

Table 6: Trafford General Hospital ED: Assault attendances by gender, mode of arrival and age group, April 2011 to March 2012*

| Injury type | Assault attendees (n=545) | | All injuries % (n=58,157) |
|---------------------|---------------------------|----|---------------------------|
| | n | % | |
| Gender | | | % |
| Female | 155 | 28 | 50 |
| Male | 390 | 72 | 50 |
| Arrival mode | | | |
| Ambulance | 152 | 28 | 15 |
| Other | 393 | 72 | 85 |
| Age group | | | |
| 0 - 4 | *** | 0 | 6 |
| 5 - 19 | 127 | 23 | 19 |
| 20 - 34 | 257 | 47 | 21 |
| 35 - 49 | 107 | 20 | 19 |
| 50 - 64 | 39 | 7 | 14 |
| 65 plus | *** | 2 | 20 |

* Percentages may not total 100 due to rounding.

Author: Ian Warren, Published: June 2012

For further information please contact: Centre for Public Health, Research Directorate, Liverpool John Moores University, 2nd Floor, Henry Cotton Building, 15-21 Webster Street, Liverpool, L3 2ET.

Tel: 0151 231 4513 or Email: i.j.warren@ljmu.ac.uk

Website: www.tiig.info (data requests should be made through the website)